

Hammerwich Environment Group (HEG)

www.hammerwicheg.co.uk

This newsletter is being distributed by email, post and being placed on the website. It is compiled by Robert Sharp and material should be sent to photos@hammerwicheg.co.uk. Also email to join the group.

Wildflower Meadow

Work has begun on establishing a half-acre wildflower meadow alongside the Church path. The top layer of plants has been removed and both annual and perennial wildflower seeds sown.

The plants should attract insects, especially moths and butterflies, and this will attract more birds.

Plants sown include, Bird's foot trefoil, Cowslip, Lady's bedstraw, Field scabious, Ox-eye daisy, Wild carrot, Kidney vetch, White campion, Corn poppy, Marigold, Cornflower, Corncockle and Corn chamomile.

The aim is to manage this half-acre and then add another half-acre strip later and another until the whole field is a meadow.



New County records



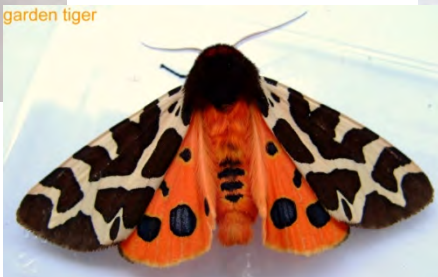
Two moths have been trapped in Hammerwich that are new to Staffordshire.

Coleophora alcyonipennella

The highlight of the summer was the appearance of a leopard moth,

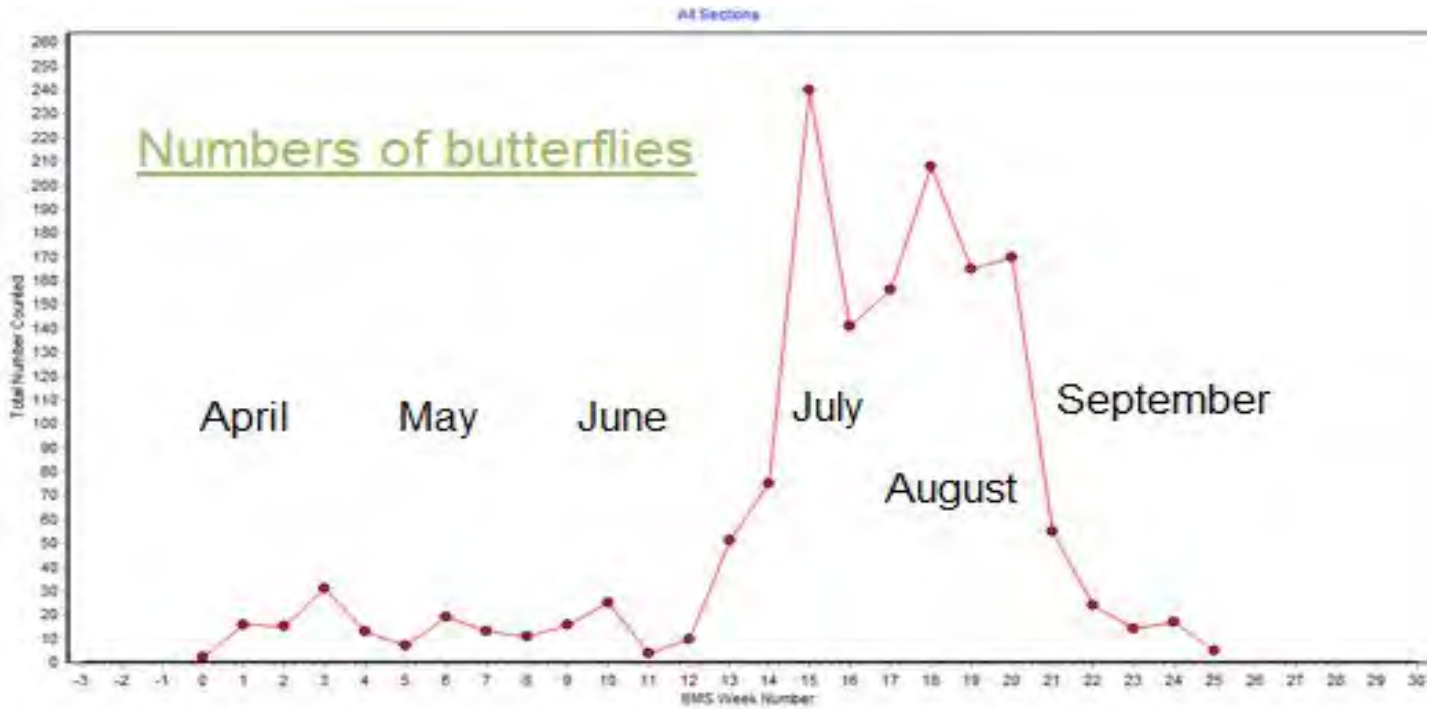


and a garden tiger.



Over 30 moths have been added to the County record lists for the area this year. 400 species have now been recognised for Hammerwich.

A two kilometre path along Dark Lane and across Hammerwich Hall farm has been accepted by “Butterfly Conservation” as a path to walk whilst counting butterflies. It has been walked each week for 26 weeks and the numbers of butterflies shown in



the graph indicate high numbers in July and August. It is hoped to walk the path for another four years and show the changes in butterfly frequencies with global warming. The highlight was the finding and photographing of three uncommon species:



Female Essex skipper on left with a male Small skipper on its right.

Large skipper.

It is a target for the wildflower meadow to encourage the appearance of

these skippers and another rarer kind.



“Hammerwich Hoard”

Is everyone aware of what was found here at this secret location? Does this mean that Hammerwich is now definitely on the Saxon map?

Was the hoard abandoned when a Mercian king passed by and was attacked by the Hammerwich Vandals? Is it loot from King Arthur’s sixth battle on the river Bassas or Blackbrook? Should it stay locally or go to London?

